

SARAH TOMASETTI

POSTCARD FROM THE ROOF OF THE WORLD

1 – 20 MAY 2018

PAINTINGS

STOCK NO.

1. *Dawn over Kailash* 2017
oil and graphite on fresco plaster
190 x 146 cm

AG111355



2. *Eastern Valley triptych* 2017
oil and graphite on fresco plaster
132 x 173 cm

AG111263



3. *Kailash North Face V* 2017
oil and graphite on fresco plaster
122 x 180 cm

AG111257



4. *Dolma La* 2018
oil and graphite on fresco plaster
122 x 180 cm

AG111353



5. *Mist over Vajrapani* 2017
oil and graphite on fresco plaster
122 x 180 cm

AG111370



6. *Through the pass* 2017
oil and graphite on fresco plaster
142 x 132 cm

AG111258



7. *From Dirapuk* 2017
oil and graphite on fresco plaster
132 x 142 cm

AG111259



8. *Silver mountain* 2017
oil and graphite on fresco plaster
132 x 137 cm

AG111255



9. *Approaching Gauri Kund* 2018
oil and graphite on fresco plaster
142 x 122 cm

AG111260



10. *First ice, Ben Lomond plateau* 2016
oil, tempera and pencil on fresco plaster
112 x 147 cm

AG110004



11. *Kailash North Face IV* 2017
oil and graphite on fresco plaster
120 x 88 cm

AG111256



12. *Study for, Dolma La IV* 2018
oil on fresco plaster
71 x 71 cm (tondo)

AG111354



13. *The outer Kora* 2018
oil on fresco plaster
50 x 70 cm (tondo)

AG111356



14. *Foothills of Vajrapani* 2018
oil and graphite on fresco plaster
30 x 61 cm

AG111261



15. Study for, *Jewel of Snows II* 2017
oil on fresco plaster
30 x 30 cm (tondo)

AG111279



16. Study for, *Kailash II* 2017
oil on fresco plaster
30 x 30 cm (tondo)

AG111280



17. Study for, *Eastern Valley I* 2017
oil on fresco plaster
30 x 30 cm (tondo)

AG111277



18. Study for, *Dusk on Jacob's Ladder III* 2017
oil on fresco plaster
30 x 30 cm (tondo)

AG111372



19. Study for, *Vajrapani I* 2018
oil and graphite on fresco plaster
25 x 35 cm (tondo)

AG111262



20. Study for, *Eastern Valley II* 2018
oil on fresco plaster
11 x 26 cm

AG111357



22. Study for, *Jewel of Snows I* 2018
oil and encaustic on fresco plaster
11 x 26 cm

AG111268



23. Study for, *The outer Kora* 2018
oil and encaustic on fresco plaster
11 x 26 cm

AG111371



24. *Knot II* 2015
oil and encaustic on fresco plaster
11 x 26 cm

AG111271



25. *Knot I* 2015
oil and encaustic on fresco plaster
11 x 26 cm

AG111272



26. Study for, *Valley I* 2018
oil and encaustic on fresco plaster
16 x 16 cm (tondo)

AG111267



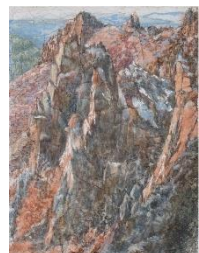
27. Study for, *Dolma La II* 2017
oil and encaustic on fresco plaster
14 x 11 cm

AG111264



28. Study for, *Dusk on Jacob's Ladder I* 2017
oil and encaustic on fresco plaster
14 x 11 cm

AG111362



29. Study for, *First ice, Ben Lomond plateau II* 2017
oil and encaustic on fresco plaster
14 x 11 cm

AG111363



30. *Night peak I* 2015
oil and encaustic on fresco plaster
13.5 x 13.5 cm (tondo)

AG111358



31. *Night peak II* 2015
oil and encaustic on fresco plaster
13.5 x 13.5 cm (tondo)

AG111359



32. *Study for, Dolma La I* 2017
oil and encaustic on fresco plaster
13.5 x 13.5 cm (tondo)

AG111265



33. *Study for, Eastern Valley III* 2018
oil on fresco plaster
13.5 x 13.5 cm (tondo)

AG111360



34. *Study for, Dirapuk I* 2017
oil and encaustic on fresco plaster
13.5 x 13.5 cm (tondo)

AG111269



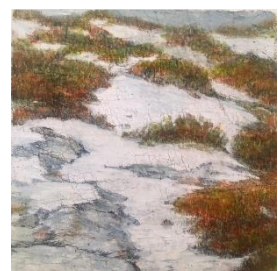
35. *Unknown peak* 2016
oil and encaustic on fresco plaster
13.5 x 13.5 cm (tondo)

AG111361



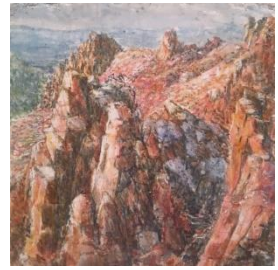
36. *Study for, First ice, Ben Lomond plateau I*
2017
oil and encaustic on fresco plaster
11 x 11 cm

AG111364



37. Study for, *Dusk on Jacob's Ladder II* 2017
oil and encaustic on fresco plaster
11 x 11 cm

AG111365



PORTRAITS

38. *Tenzin Pelmo I* 2017
oil on fresco plaster
30 x 30 cm (tondo)

AG111273



39. *Tenzin Pelmo II* 2017
oil on fresco plaster
30 x 30 cm (tondo)

AG111274



40. *Tenzin Pelmo IV* 2017
oil on fresco plaster
30 x 30 cm (tondo)

AG111275



41. *Tenzin Pelmo V* 2017
oil on fresco plaster
30 x 30 cm (tondo)

AG111276



42. *Tenzin Pelmo VI* 2018
oil on fresco plaster
30 x 30 cm (tondo)

AG111366



43. *Nyishe I* 2018
oil on fresco plaster
30 x 30 cm (tondo)

AG111367



44. *Sleep / Wake sequence I* 2017-18
oil on fresco plaster
22 x 22 cm (tondo)

AG111368



45. *Sleep / Wake sequence II* 2017-18
oil on fresco plaster
22 x 22 cm (tondo)

AG111369



46. *Study for Pelmo I* 2017
oil and encaustic on fresco plaster
16 x 16 cm (tondo)

AG111270



The artist would like to acknowledge the profound contribution made by photographer Samuel Zuder to the development of this work. Thank you also to Tenzin Pelmo and Tenzin Nyishe for sitting for the *Sleep / Wake Sequence* of portraits and for conversations on the experience of migration. For the loan of books on Tibet and the serving of delicious mo-mo's at Northern Soul, my thanks to Samdup Gyatso and Fi Harrison. Thanks also to Les Walkling for exacting documentation and to Heather Hesterman, Maurizio Toscano and the whole team at Australian Galleries for continued advice and moral support!